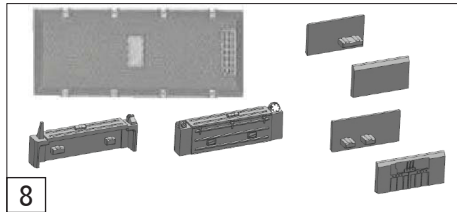
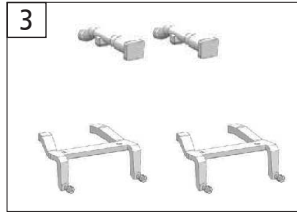


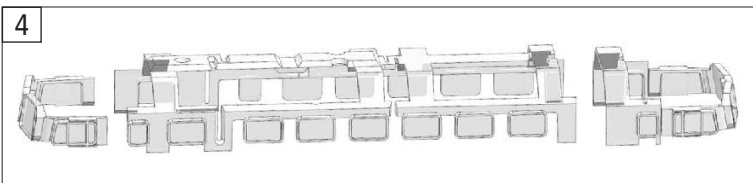
14



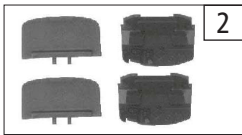
8



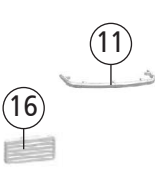
3



4



2



11

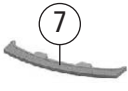
16



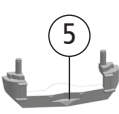
6



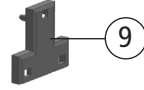
17



7



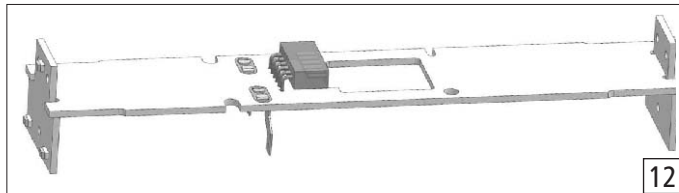
5



9



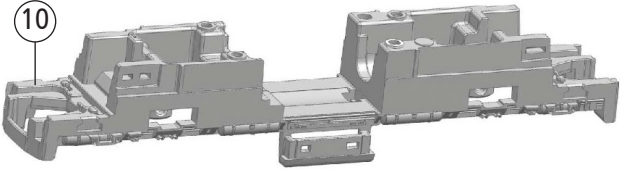
13



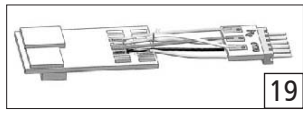
12



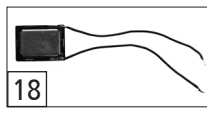
15



10



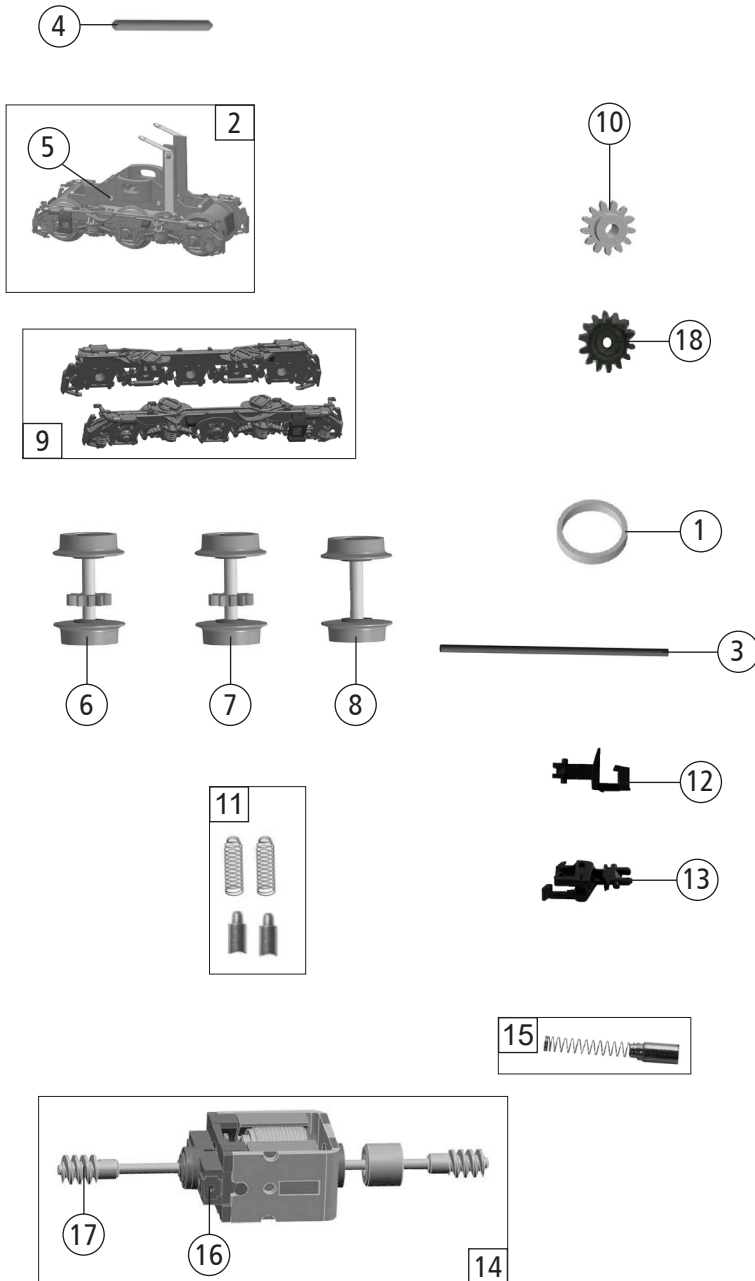
19



18

Pos. Nr. Pos.no.	Beschreibung Description	Art.-Nr. Art.no.	Preisgruppe Price bracket
725211	GySEV M62	=	N
725291		=	N
1	GEHÄUSE KPL. Betr. Nr. M62-902 Body assembly Loco no. M62-902	10725211	35
2	HIMMEL-FÜHRERSTAND-SATZ Part set for drivers cab	12725211	19
3	LICHT-LICHTLEITER-SATZ Part set - light, light guide	13725201	11
4	TS - FENSTER Part set - Windows	14725211	16
5	SCHÜRZE Skirt	15725211	5
6	TS-DACHLÜFTER, MAKROFON, Part set - Roof fan, makrofon,	18725211	5
7	UMLAUF Running board	187252111	5
8	TS - DACHDECKEL, TANKBEHÄLTER Part set - Roof cover, fuel tank	19725211	13
9	LED MASKE LED mask	146868	3
10	GRUNDRAHMEN Main frame	40725211	23
11	STIRNGRIFF Front handle	187252112	6
12	PLATINE KPL. PCB complete	65719300	20
13	GF-SCHRAUBE M1,6X5 mm GF-screw	115269	3
14	PUFFER RUND Buffer round	75725211	5
15	DEICHSELFEDER Spring for rod	76702400	1
16	LÜFTERGITTER Fan grill	187252113	5
17	STECKER F. SCHNITTSTELLE Connector for interface	00664005	13
Sound			
18	LAUTSPRECHER Loudspeaker	129524	13
19	SOUNDDECODER Sound decoder	68725271	41

Änderungen in Konstruktion und Ausführung vorbehalten
We reserve the right to change the construction and specification



725211		GySEV	M62	=		N
725291				=	🔊	N
Pos. Nr. Pos.no.	Beschreibung Description	Art.-Nr. Art.no.	Preisgruppe Price bracket			
1	HAFTREIFEN Traction tyre	00547001	1			
2	DREHGESTELLBLOCK KPL. Bogie complete	45725211	16			
3	KUPPLUNGSHALTESTANGE Clutch retainer rod	38734501	9			
4	ACHSE Z. DG. BEFESTIGUNG Axle for bogie fastening	00527002	2			
5	ACHSE Axle	00527009	1			
6	RADSATZ KPL. MIT ZAHNRAD Wheelset complete with gear	53716100	13			
7	RADSATZ KPL. MIT ZAHNRAD Wheelset complete with gear	53716200	13			
8	RADSATZ KPL. Wheelset complete	53716300	14			
9	TS-DREHGESTELLBLENDEN 1+2 Part set - Boogie frame 1+2	41725211	19			
10	ZAHNRAD Z:13 Gearwheel	00567149	6			
11	SCHLEIFKOHLEN Carbon brushes	6518	---			
12	STANDARD-STECKKUPLUNG Standard coupling	9525	---			
13	PROFI-STECKKUPLUNG Profi coupling	9545	---			
14	MOTOR KPL. Motor complete	50725201	31			
15	KOHLEBÜRSTE+FEDER Carbon brush+spring	133936	6			
16	KOHLENHALTER Carbon brush holder	00507801	1			
17	SCHNECKE Wormgear	56762100	8			
18	ZAHNRAD Z=14 Gearwheel	146314	5			