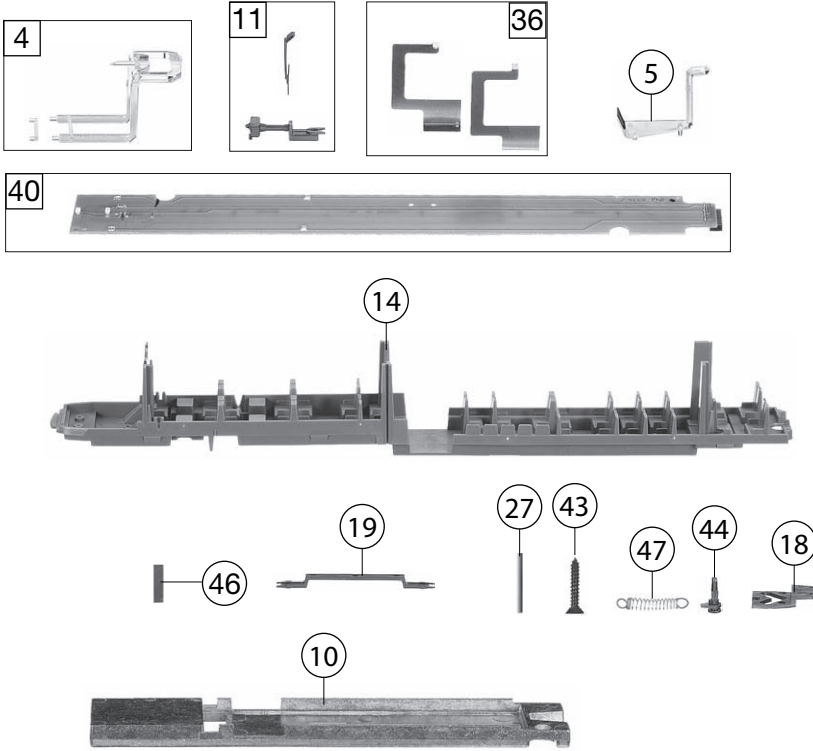
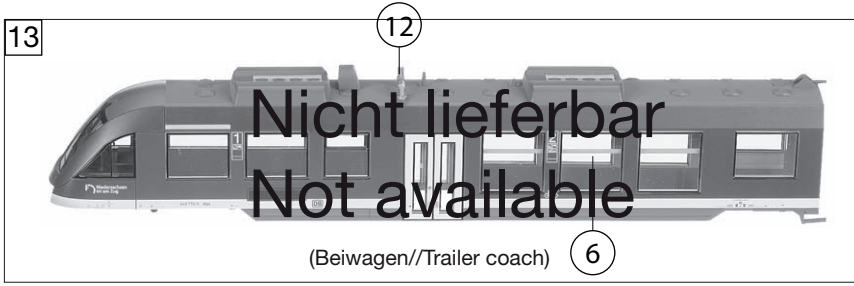


442301 BR 648 LINT Nordbahn = **HO**

| Pos. Nr. Pos.no. | Beschreibung Description | Art.-Nr. Art.no. | Preisgruppe Price bracket |
|---------------------|--|---------------------|------------------------------|
| 1 | GEHAUESE F.MOT.TK LINT (n. lieferb.) Motor coach body (not available) | | |
| 2 | FUEHRERSTAND M. LOKF. Driver's cab inset | 00124420 | 012 |
| 3 | FALTENBALG F.4420 Gangway bellows | 00125116 | 009 |
| 4 | LICHTLEITER-SATZ F.4420,4423 Light conductor set | 00134420 | 009 |
| 5 | LICHTLEITER-SATZ F.4420 Light conductor set | 01344201 | 012 |
| 6 | FENSTERSATZ F.TRIEBWAGEN O.MOT. Trailer coach window set | 00144420 | 022 |
| 7 | FENSTERSATZ F.TRIEBWAGEN M.MOT. Motor coach window set, with motor | 01444201 | 022 |
| 8 | INNENEINRICHTUNG F.MOTORWAGEN Interior fittings for motor coach | 00154420 | 011 |
| 9 | BESCHWERUNG F.4420,4423 Ballast for power car | 00164420 | 014 |
| 10 | BESCHWERUNG F.LINT O.MOTOR Ballast for trailer car | 01644201 | 013 |
| 11 | SCHEIBENWISCHER, KUPPL.ATTR./S. Windshield wipers, coupling imitation-set | 00194420 | 007 |
| 12 | ABGASHUTZEN F.4420,4423 Exhaust silencer | 00194855 | 003 |
| 13 | GEH.TK O.M.4420 (n. lieferb.) Trailer car body (not available) | | |
| 14 | INNENEINRICHTUNG F.TK O.MOT. Interior fittings for trailer car | 00254420 | 011 |
| 15 | JAKOBSDREHGESTELL F.4420,4423 JAKOBS bogie | 00304420 | 018 |
| 16 | DREHGESTELLRAHMEN F.4420,4423 Bogie framework | 00314420 | 009 |
| 17 | WAGENBODEN F.4420 F.TK M.MOT. (n. lieferb.) Floor plate for motor coach (not available) | | |
| 18 | DREHGEST.AUFN.F.JAKOBSDREHGEST Bogie reception connector | 00384420 | 003 |
| 19 | KUPPELSTANGE F.4420,4423 Coupling rod | 00386012 | 002 |
| 20 | DREHGESTELLRAHMEN F.LAUFGEST. Bogie framework | 00414420 | 009 |
| 21 | WAGENBODEN F.4420 O.MOT. (n. lieferb.) Floor plate for trailer car (not available) | | |
| 22 | DREHGEST.BLOCK F.4420,4423 Bogie block | 00454420 | 016 |
| 23 | LAUFDREHGEST.BLOCK F.4420,4423 Bogie block | 00464420 | 013 |
| 24 | MOTOR KPL.M.SCHWUNGMASSE Motor with flywheel, complete | 00504420 | 029 |
| 25 | KOHLLENHALTER Brush holder | 00507801 | 001 |
| 26 | MOTORHALTEBUEGEL Motor retainer clip | 00507903 | 004 |
| 27 | ACHSE Axle | 00524014 | 002 |
| 28 | ACHSE Axle | 00527001 | 002 |
| 29 | RADSATZ M.Z.M.1 N.F.4420,4423 Wheelset with gear wheel, with trac. tyre | 00534119 | 012 |
| 30 | RADSATZ EINS.ISO. 25MM F.4420 Wheelset single side insulated | 00534120 | 007 |
| 31 | RADSATZ O.Z.O.N.F.4420,4423 Wheelset w/o gear wheel, w/o trac. tyre | 00534121 | 012 |
| 32 | HAFTREIFEN HO Traction tyre | 00544011 | 001 |
| 33 | ZAHNRAD Z:16/0.4 Gear wheel | 00564189 | 005 |
| 34 | ZAHNRAD Z:13 SCHWARZ Gear wheel | 00567149 | 006 |
| 35 | SCHNECKE D = 4MM L = 5MM Worm gear | 00567601 | 007 |
| 36 | KONTAKTBUEGEL SATZ F.4420,4423 Contact plate assy | 00614978 | 008 |
| 37 | KONTAKTPILZGARNITUR L:10 MM Contacter pin assembly | 00644407 | 011 |



| 442301 | | BR 648 LINT | Nordbahn | = | HO |
|----------------------|---|----------------------|------------------------------|---|----|
| Pos. Nr. Pos. no. | Beschreibung Description | Art.-Nr. Art. no. | Preisgruppe Price bracket | | |
| 38 | MOTORLEITERPLATTE F.4420,4423 Motor PCB | 00654108 | 018 | | |
| 39 | SCHALTPL.M.SS U.LICHTLEITER PCB with interface, with light conductor | 00654109 | 030 | | |
| 40 | LEITERPL.M.LICHTLEITER F.4420 PCB with light conductor | 00654110 | 027 | | |
| 41 | SCHNITTST.-BLINDSTECKER 8-POL. Jumper 8-pin | 00664001 | 012 | | |
| 42 | FLACHLEITER M.STECKER 8-POL. Ribbon cable with plug, 8-pin | 00664004 | 018 | | |
| 43 | SENKKOPFBLECHSCHR.2,2X16 KS Countersunk tapping screw | 00714516 | 001 | | |
| 44 | SPLINT F. 4420,4423 Split pin | 00730576 | 001 | | |
| 45 | SPLINT F. 4420,4423 Split pin | 00730577 | 003 | | |
| 46 | BLATTRICHTFEDER L=14 MM Flat straightening spring | 00764012 | 002 | | |
| 47 | ZUGFEDER F.4420,4423 Draw spring | 00764115 | 002 | | |
| 48 | KONTAKTFEDER F.4420,4423 Contact spring | 00764333 | 001 | | |
| | ERSATZ-SCHLEIFKOHLEN (o. Abb.) Carbon brushes (w/o illustr.) | 6518 | --- | | |