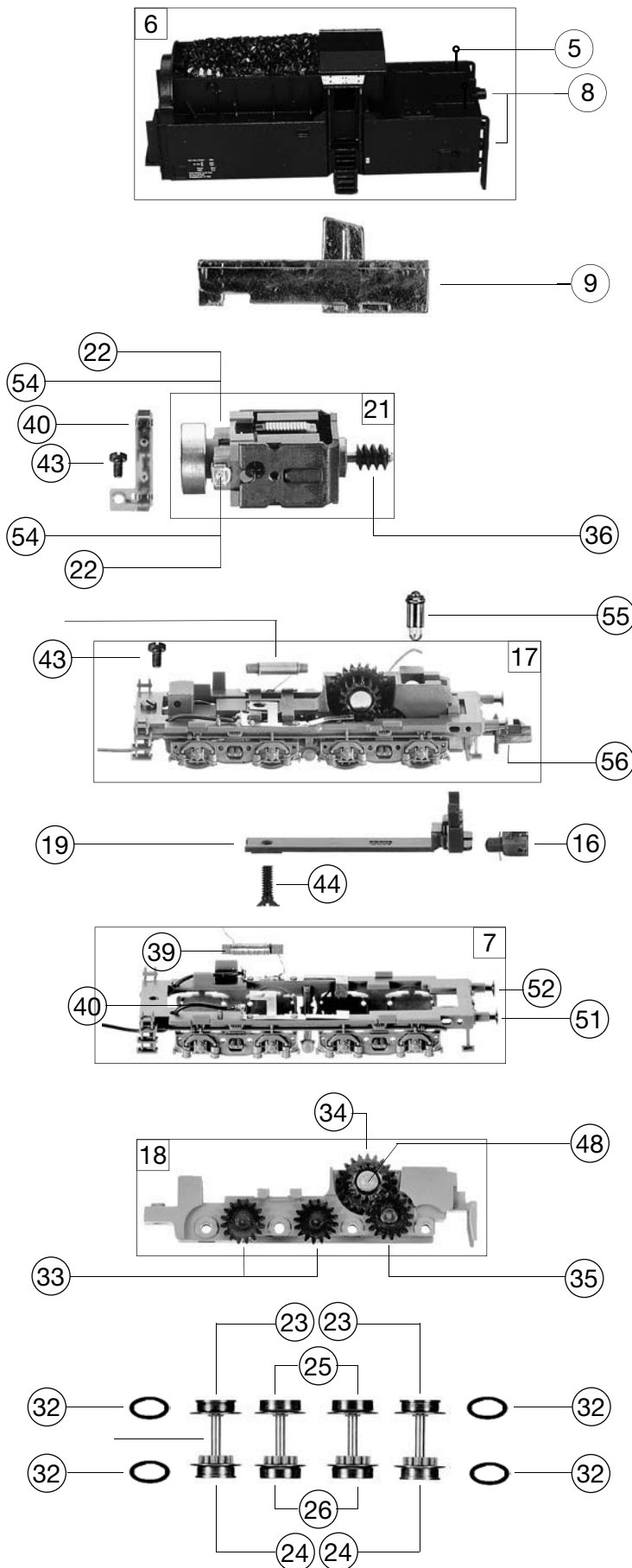


| 718482 | BR 50 | 50 981 | DB | DCC | N |
|---------------------|--|--------|---------------------|------------------------------|---|
| Pos. Nr. Pos.no. | Beschreibung Description | | Art.-Nr. Art.no. | Preisgruppe Price bracket | |
| 1 | LOKGEHÄUSE KPL. Loco body complete | | 10718402 | --- | |
| 2 | UMLAUFBLECH Running board | | 00117184 | 19 | |
| 3 | LICHTLEITER-SATZ Light conductor set | | 00137181 | 11 | |
| 4 | KLEINTEILE-SATZ Set of small parts | | 00197181 | 7 | |
| 5 | GRIFFSTANGEN F.TENDER Tender handrails | | 00197704 | 5 | |
| 6 | TENDERGEHÄUSE KPL. Tender body complete | | 20718482 | --- | |
| 7 | TENDERRAHMEN KPL. Tender frame complete | | 21718482 | --- | |
| 8 | LICHTLEITER/TENDER Light conductor for tender | | 00237182 | 4 | |
| 9 | TENDERBESCHWERUNG Tender ballast | | 02671821 | 15 | |
| 10 | LOKFAHRGESTELL KPL. Loco chassis complete | | 30718482 | --- | |
| 11 | LOKFAHRGESTELL MIT RÄDER Loco chassis with wheels | | 31718402 | --- | |
| 12 | STEUERUNG KPL.SCHWARZ VERN. Reversing gear complete, darkened | | 00327184 | 28 | |
| 13 | DECKPLATTE UNTEN Bottom cover plate | | 00337184 | 6 | |
| 14 | LOK-TENDER KURZ-KUPPLUNG Loco-tender short coupling | | 00347181 | 5 | |
| 15 | VORLAUFGESETZ KPL. Set of carrying wheels (front) | | 37718402 | --- | |
| 16 | ADAPTER F.DAMPFLOKS (Tender) Steam loco coupling adapter (tender) | | 00387003 | 7 | |
| 17 | TENDERFAHRGESTELL KPL. OHNE MOTOR Tender chassis complete, w/o motor | | 40718482 | --- | |
| 18 | TENDERFAHRGESTELL M.Z. Tender chassis with gearset | | 00417181 | 20 | |
| 19 | TENDERDECKPLATTE UNTEN Bottom tender cover plate | | 00437181 | 6 | |
| 20 | ZYLINDERKASTEN/SATZ Cylinder box set, complete with boiler support | | 00487182 | 18 | |
| 21 | MOTOR M.SCHW.M.MASSEKONTAKT Motor complete with flywheel, with ground cont. | | 00507182 | 28 | |
| 22 | KOHLENHALTER Carbon brush holder | | 00507801 | 1 | |
| 23 | TENDERRAD O.Z.M.N.ISO.ROT Tender wheel w/o gear, with trac. tyre, insul, red | | 00517003 | 6 | |
| 24 | TENDERRAD M.Z.M.N.ISO.ROT Tender wheel with gear, with trac. tyre, insul, red | | 00517004 | 6 | |
| 25 | TENDERRAD O.Z.O.N.ISO.ROT Tender wheel w/o gear, w/o trac. tyre, insul, red | | 00517013 | 7 | |
| 26 | TENDERRAD M.Z.O.N.ISO.ROT Tender wheel with gear, w/o trac. tyre, insul, red | | 00517017 | 7 | |
| 27 | TREIBRAD LINKS F.BR 50 4-DOM. Left driving wheel | | 00517072 | 8 | |
| 28 | TREIBRAD RECHTS NIEDR.SPURKR. Right driving wheel, low flanges | | 00517073 | 8 | |
| 29 | KUPPELRAD NIEDR.SPURKRANZ Coupled wheel, low flanges | | 00517074 | 8 | |
| 30 | ACHSE Axle | | 00527007 | 1 | |
| 31 | VORLAUF-SCHEIBEN-RS BR 50 KAB Forward carrying wheelsset (disc type wheels) | | 00537066 | 12 | |
| 32 | HAFTREIFEN Traction tyre | | 00547001 | 1 | |
| 33 | ZAHNRAD Z:16 SCHWARZ Gear wheel Z=16, black | | 00567104 | 3 | |
| 34 | ZAHNRAD Z:14/22 SCHWARZ Gear wheel Z=14/22, black | | 00567113 | 2 | |
| 35 | ZAHNRAD Z:17 SCHWARZ Gear wheel Z=17, black | | 00567147 | 6 | |
| 36 | SCHNECKE D = 4MM L = 5MM Worm gear | | 00567601 | 7 | |
| 37 | STROMABNEHMEREINSATZ KPL. Power pick-up, complete | | 00607181 | 13 | |



| 718482 | BR 50 | 50 981 | DB | DCC | N |
|---------------------|--|--------|---------------------|------------------------------|---|
| Pos. Nr. Pos.no. | Beschreibung Description | | Art.-Nr. Art.no. | Preisgruppe Price bracket | |
| 38 | LAMPENHALTER M.BELEUCHTUNGSFE. Lamp holder with contact spring | | 00637181 | 11 | |
| 39 | ENTSTOERDROSSEL Suppressor choke | | 00644101 | 7 | |
| 40 | SCHALTPLATTE TEND.KPL.F.BR 50 Tender PCB, complete | | 00657095 | 18 | |
| 41 | SCHALTLITZE SCHWARZ 350 MM Connecting cable, black, 350 mm long | | 00667000 | 9 | |
| | Lokempfänger DCC (RailCom) N (o. Abb.) DCC Decoder (RailCom) N (w/o illustr.) | | 68718482 | --- | |
| 43 | SCHRAUBE M 1,4 X 3 Metric screw M 1.4x3 | | 00700203 | 1 | |
| 44 | SENKSCHR.F.MOTOR Countersunk screw for motor | | 00702908 | 1 | |
| 45 | LINSENSCHRAUBE Button screw | | 00704902 | 2 | |
| 46 | LINSENSCHRAUBE Button screw | | 00704904 | 2 | |
| 47 | BLECHSCHRAUBE M.KREUZSCHLITZ Phillips screw | | 00713309 | 1 | |
| 48 | BOLZEN F. ZAHNRAD Bolt for gear wheel | | 00730504 | 2 | |
| 49 | BOLZEN F.KUPPELSTANGE Bolt for coupling rod | | 00730562 | 2 | |
| 50 | BOLZEN F. KUPPELSTANGE Bolt for coupling rod | | 00730570 | 1 | |
| 51 | STECKPUFFER (GEWÖLBT) Plug-in buffer, curved | | 00757011 | 2 | |
| 52 | STECKPUFFER (FLACH) Plug-in buffer, flat | | 00757012 | 2 | |
| 53 | DRUCKFEDER F.LOK-TENDER-KUKU Pressure spring for loco-tender coupling | | 00767012 | 1 | |
| 54 | ERSATZ-SCHLEIFKOHLEN Spare carbon brushes | | 6518 | --- | |
| 55 | ERS.-GLUEHLAMPE KLAR M.STECKFA Clear bulb with plug-in socket | | 00006535 | 8 | |
| 56 | STANDARD-STECKKUPPLUNG Standard plug-in coupling | | 9525 | --- | |
| | PROFI-STECKKUPPLUNG (o. Abb.) Profi plug-in coupling (w/o illustr.) | | 9545 | --- | |
| | HALTEPLATTE F.87182,87184 (o. Abb.) Support plate (w/o illustr.) | | 00627182 | 3 | |