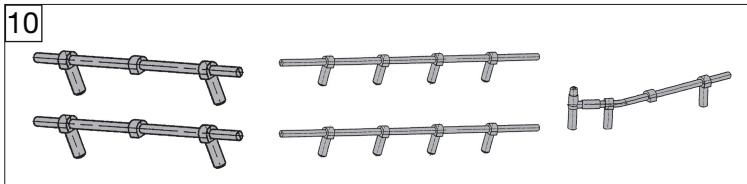
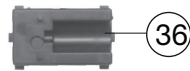
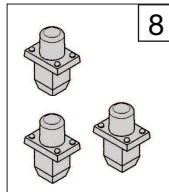
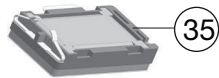
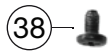
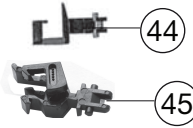
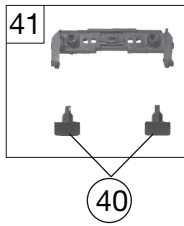
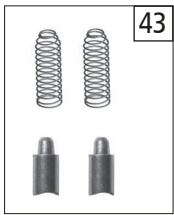


Pos. Nr. Pos.no.	Beschreibung Description	Art.-Nr. Art.no.	Preisgruppe Price bracket
1	LOKGEHÄUSE KPL. Body assembly complete	10738804	035
2	FÜHRERSTAND/SATZ Driver's cab set	12724501	019
3	LICHTMASKE Light mask	12738801	006
4	LICHTLEIT.-FENSTERBL.-SATZ Light conductor & window -set	13738802	008
5	ZUGHAKEN-BREMSKUPPLUNG-SATZ Coupling hook, brake coupling set	19733001	012
	ISOLATOREN -SATZ (o.Abb.) Set of isolators (w/o illustration)	19738804	012
7	SIGNALHORN -SATZ BASALTGRAU Signal horn set	19765200	011
8	ANTENNEN-SATZ Antenna set	19797000	015
9	TRITT gestempelt Treadle	19797200	006
10	DACHLEITUNG - SATZ Roof wiring - set	19797400	005
11	GRIFFFSTANGEN -SATZ feuerrot Hand-rail -set	19797500	005
12	SCHNEERÄUMER-SATZ Snow plow - set	22724501	012
13	ZUGKRAFTANLENKUNG -SATZ Bogie linkage - set	02273201	009
14	TRAFOWANNE AC gestempelt Transformer tub	33738802	006
15	KUKU-DEICHSEL Short coupling reception	00387006	005
16	GRUNDRAHMEN Basic frame	40738801	019
17	DREHGESTELLRAHMEN schwarz Bogie framework black	41738804	011
18	DEICHSELABDECKUNG -SATZ Shaft cover plate - set	43724501	009
19	DREHGESTELLBLOCK KPL. Bogie block complete	45738801	018
20	MOTOR KPL. Motor complete	50738801	029
21	MOTORHALTER Motor holder	50792000	008
22	ACHSE Axle	00527009	001
23	ACHSE F. DREHGESTELLBEFESTIGUNG Bogie fixation pin	00527010	001
24	RADSATZ KPL. O.N. Wheelset complete w/o traction tyre	00537067	015
25	RADSATZ KPL. M.N. Wheelset complete with traction tyre	00537068	015
26	HAFTREIFEN Traction tyre	00547002	001
27	UNTERSETZUNGSRAD 04/11-03/21 Reduction gear wheel	56719400	005
28	ZAHNRAD 03/18 Gear wheel 03/18	56719500	005
29	SCHNECKE D = 3,5MM L = 5MM Worm gear D = 3,5MM L = 5MM	00567611	006



738874 482 SBB (Cargo)					<b>N</b>
Pos. Nr. Pos.no.	Beschreibung Description	Art.-Nr. Art. no.	Preisgruppe Price bracket		
30	KONTAKTBLECH-SATZ Contacter sheet set	61780300	007		
	LEITERPLATTE UNTEN KPL. (o.Abb.) Lower PCB complete (w/o Illustration)	65721800	018		
	LEITERPLATTE KPL. OBEN INCL. L (o.Abb.) Upper PCB complete (w/o Illustration)	65722000	018		
33	EINHOLMPANTO. M.LANG.SCHLEIFST Single arm pantograph w.long rod	67703600	022		
34	EINHOLMPANTO. M.KURZ.SCHLEIFST Single arm pantograph w.short rod	67703700	022		
35	LAUTSPRECH.9x16 FOX M.KLEBEPAD Speaker 9x16 with adhesive pad	68701100	016		
36	LAUTSPRECHERAUFNAHME f. 738871 Loudspeaker reception	68702300	016		
	SOUNDDECODER ZIMO MX658N18 (o.Abb.) Sound-decoder Zimo (w/o Illustration)	68738874	041		
38	LINSENSCHRAUBE M 1,2 X 3 H Button screw M 1,2 X 3 H	70900005	002		
39	SCHRAUBE M 1,6 X 4 Screw M 1,6 X 4	70900006	002		
40	PUFFER schwarz Buffer black	75711900	004		
41	PUFFERTRÄGER KPL. Buffer beam complete	75738801	011		
42	RICHTFEDER f.DEICHEL L=15mm Straightening spring for bogie	00767008	001		
43	ERSATZ-SCHLEIFKOHLEN/SATZ Carbon brushes set	6518736604	009		
44	STANDARD-STECKKUPPLUNG Standard clip-in coupling	9525	---		
45	PROFI STECKKUPPLUNG Profi clip-in coupling	9545	---		