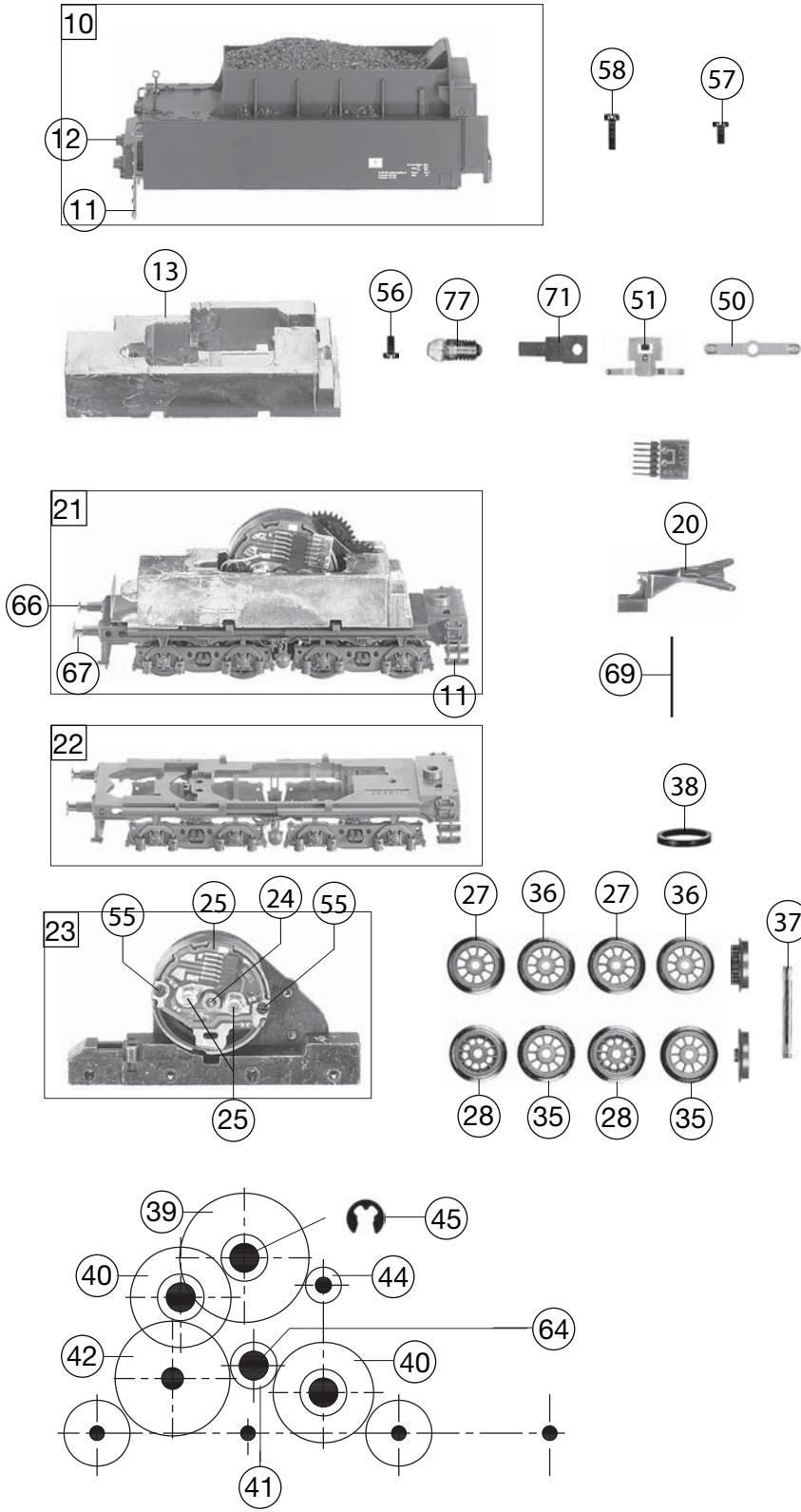


74174		BR 50 DB	050478-7			HO
Pos. Nr. Pos.no.	Beschreibung Description	Art.-Nr. Art.no.	Preisgruppe Price bracket			
1	LOKKESSEL BR 50 DB 74174 Loco boiler with WITTE wind deflectors	01041741	035			
2	FUEHRERHAUS KPL.F.74174 DB Driver's cab	01141741	025			
3	WITTE-WINDEITBLECHE-SATZ WITTE wind deflectors -set	00124065	011			
4	LICHTLEITER GROSS Light conductor, big	00131179	002			
5	BESCHWERUNG Ballast	00164175	014			
6	GLOCKE F.BR 50,65 (o. Abb.) Bell (w/o illustr.)	00194503	003			
7	PFEIFE Whistle	00194601	004			
9	KUPPLUNGSHAKEN Coupling hook	00194802	002			
10	TENDERGEHAEUSE BR 50 DB 74174 Tender body	02041741	022			
11	LEITERN-SATZ Set of ladders	00224175	011			
12	LICHTLEITER/TENDER 4182 Light conductor/tender	00234182	006			
13	TENDERBESCHWERUNG 4169/71/81 Tender ballast	00264169	014			
14	LOKFAHRGESTELL KPL.F.74174 Loco chassis complete	03041741	043			
15	STEUERUNG KPL.F.BR 50 DR Reversing gear complete	00324182	033			
16	ZYLINDERKASTEN S.BR 50 DB Cylinder & r -set	00334179	013			
17	KUPPELLASCHEN M. FEDER/SATZ Coupling betw. loco&tender, with spring -set	00344174	011			
18	FEUERBUCHSE Fire box	00364179	011			
19	VORLAUFGEST.ERS.F.374175 Carrying wheelset (front), complete	00370179	018			
20	KUKU-DEICHSEL Short coupling reception	00384003	006			
21	TENDERFAHRGEST.M.MOTOR F.74174 Tender chassis complete, with motor	04041741	039			
22	TENDERRAHMEN KPL.F.74174 Tender framework	04141741	016			
23	MOTOR M.FAHRGESTELL F.74174 Motor complete with chassis	05041741	033			
24	ANKER KPL.M.SCHWUNGMASSE Rotor complete with integr. flywheel	00504607	025			
25	LAGERSCHILD ISOL. Motor PCB, insulated	00504741	017			
26	KOHLENROHRKAPPE Brush pipe cap	00504801	002			
27	T.-U.VORLAUFRAD O.Z.O.N.ROT Tender&bogie wheel w/o gear, w/o trac. tyre, red	00514188	006			
28	T.-U.VORLAUFR.O.Z.O.N.ISO.ROT Tender&bogie wheel w/o gear, w/o trac. tyre, insul., red	00514189	007			
29	TREIBRAD LINKS ROT Left driving wheel, red	00514214	006			
30	TREIBRAD RECHTS ISO.ROT Right driving wheel, insulated, red	00514215	006			
31	KUPPELRAD LINKS ROT Left coupled wheel, red	00514216	006			
32	KUPPELRAD RECHTS ISO.ROT Right coupled wheel, insulated, red	00514217	006			
33	L.RAD F.VOR.-NACHLAUF ROT Loco wheel for carrying wheelset, red	00514218	006			
34	L.RAD F.VORLAUF ISO ROT Loco wheel for carrying wheelset, insulated, red	00514219	007			
35	TENDERRAD O.Z.M.N.ISO.ROT Tender wheel w/o gear, with traction tyre, insul.	00514378	009			
36	TENDERRAD O.Z.M.N.ROT Tender wheel w/o gear, with traction tyre, red	00514379	009			
37	ACHSE GERAENDELT 20 MM Milled axle, 20mm	00524006	002			
38	HAFTREIFEN HO Traction tyre HO	00544007	001			



74174	BR 50 DB	050478-7	☞	=	HO
Pos. Nr. Pos.no.	Beschreibung Description	Art.-Nr. Art.no.	Preisgruppe Price bracket		
39	UNTERSETZUNGSRAD Z:36/13 SCHWA Reduction gear wheel Z:36/13, black	00564101	002		
40	UNTERSETZUNGSRAD Z:28/13 SCHWA Reduction gear wheel Z:28/13, black	00564102	002		
41	ZWISCHENRAD Z:13 SCHWARZ Gear wheel Z:13, black	00564106	002		
42	ZAHNRAD Z:32 SCHWARZ Gear wheel Z:32, black	00564108	003		
	ZAHNRAD schwarz (o. Abb.) Gear wheel, black (w/o illustr.)	56419400	---		
44	RITZEL Z:10 Gear wheel Z:10	00564602	004		
45	SICHERUNGSRING GROSS Securing ring, big	00564702	001		
	UNTERLEGSCH. ROT 2,2X5X0,5 (o. Abb.) Washer, red, 2.2X5X0.5 (w/o illustr.)	00564742	001		
	UNTERLEGSCH. 2,3 X 5 X 0,1 (o. Abb.) Washer, 2.3X5X0.1 (w/o illustr.)	00564747	001		
	UNTERLEGSCH. ROT 2,2X5X0,3 (o. Abb.) Washer, red, 2.2X5X0.3 (w/o illustr.)	00564751	001		
49	STROMABNEHMEREINSATZ F.4175 SS Loco power pick-up assembly	06041751	024		
50	KONTAKTFEDER Contacter spring	00614938	001		
51	MOTORSTROMABNEHMER F.BR 50 Motor power pick-up	00614939	005		
	LAMPENHALTER FUER TENDER (o. Abb.) Lamp support for tender (w/o illustr.)	00624174	012		
54	KONTAKTPILZGARNITUR L:10 MM Contacter pin assembly	00644401	011		
55	SCHRAUBE Screw	00700313	001		
56	ZYLINDERKOPFSCHRAUBE Cylinder head screw	00700403	001		
57	SCHRAUBE Screw	00700404	001		
58	SCHRAUBE Screw	00700412	001		
59	SCHRAUBE Screw	00713506	001		
60	SCHRAUBE Screw	00713513	001		
61	ANSATZSCHRAUBE F.BR 50 VORLAUF Flanged screw (for carrying wheelset)	00730011	002		
62	SCHRAUBBOLZEN F.LOK-TEND.KUKU Flanged screw for coupling betw. loco&tender	00730031	002		
	KUNSTSTOFF-SCHRAUBE (o. Abb.) Plastic screw (w/o illustr.)	00730035	002		
64	KOPFBOLZEN Gear bearing pin	00730533	002		
65	BOLZEN F.KUPPELSTANGE Linkage pin	00730569	001		
66	Steckpuffer Plug-in buffer, curved	00754006	002		
67	STECK-PUFFER FLACH Plug-in buffer, flat	00754015	002		
68	RICHTFEDER F. VORLAUFGESTELL Flat straightening spring, for carrying wheelset	00764003	006		
69	BLATTRICHTFEDER 24 MM F.TENDER Flat straightening spring, for tender, 24mm	00764010	004		
70	ZUGFEDER F.LOK-TEN.KUKU Draw spring for coupling betw. loco&tender	00764102	004		
71	BLATTFEDER F.TENDERACHSE Flat spring for tender wheelset	00764308	001		
	FLEISCHMANN KUPPLUNG (o. Abb.) Fleischmann coupling (w/o illustr.)	6509	---		
	FLEISCHMANN KUPPLUNG (o. Abb.) Fleischmann coupling (w/o illustr.)	6510	---		
	STECK-TAUSCHKUPPLUNG (o. Abb.) Standard coupling (w/o illustr.)	6511	---		
	PROFI-STECKKUPPLUNG (o. Abb.) Profi coupling (w/o illustr.)	6515	---		

	ERSATZ-SCHLEIFKOHLEN (o. Abb.) Carbon brushes set (w/o illustr.)	6519	---
77	ERS.-GLÜHLAMPE M.SCHRAUBFAS. (Tender) Spare bulb with screw base (tender)	00006530	007
78	ERS.-GLUEHLAMPE KLAR M.STECKFA Replacement bulb, clear, with plug-in socket	00006535	008