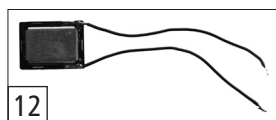


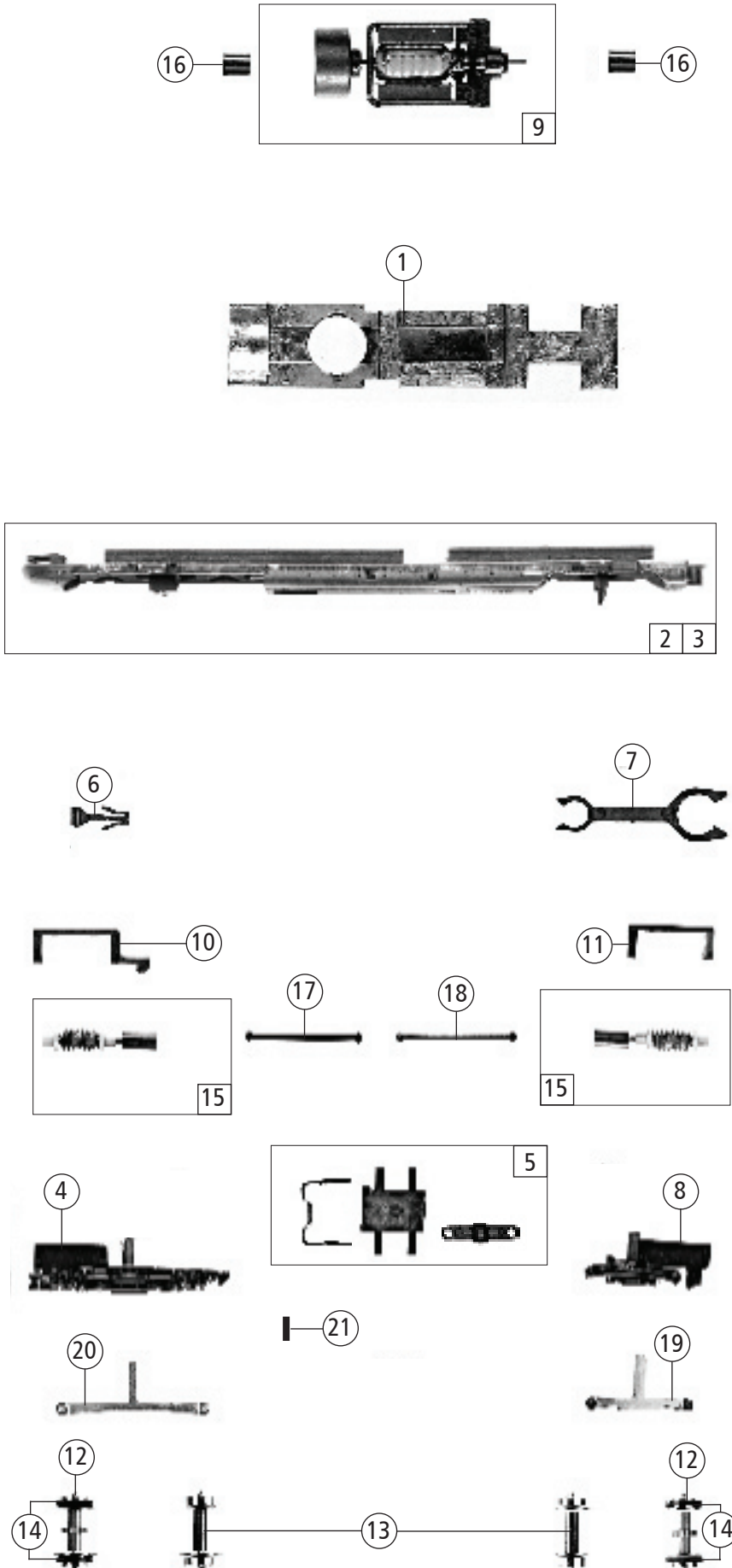
11 o. Abb. / no ill.  
Sounddecoder  
Sounddecoder

13 o. Abb. / no ill.  
Lichtwechseldecoder  
Light change decoder

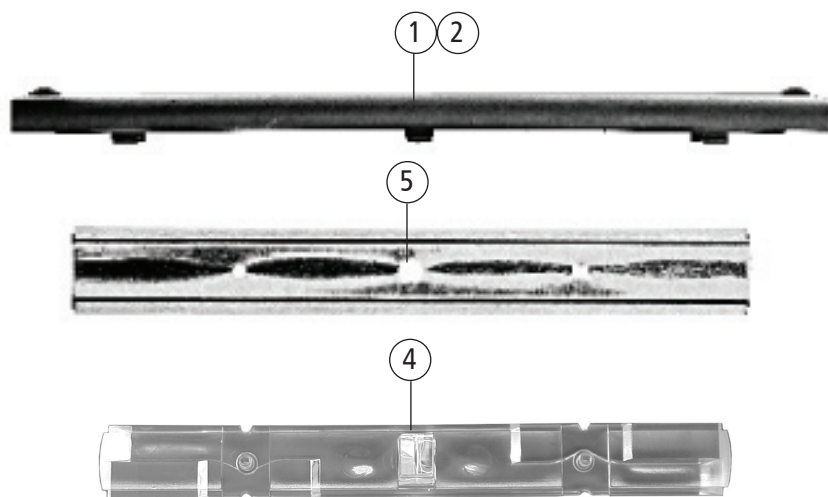


| 741075 DB VT 601 =   |  |                      |                              |
|----------------------|--|----------------------|------------------------------|
| Pos. Nr.<br>Pos. no. | Beschreibung<br>Description  | Art.-Nr.<br>Art. no. | Preisgruppe<br>Price bracket |
| 1                    | Gehäuse Motorwagen/Steuerwagen<br>VTA/VTB kpl.<br>Body VTA/VTB ass.      | 10741003             | 27                           |
| 2                    | Dach Motorwagen/Steuerwagen Vta/ Vtb<br>Roof Vta/ Vtb                    | 12741001             | 13                           |
| 3                    | Faltenbalg komplett<br>Bellows assembly                                  | 12812100             | 11                           |
| 4                    | TS-Linsen<br>Part set lens   | 13741001             | 3                            |
| 5                    | Fenster-Satz<br>Part set windows   | 15741001             | 11                           |
| 6                    | Ventilator<br>Ventilator   | 18741001             | 5                            |
| 7                    | Schaltplatine Motorwagen VTA<br>komplett<br>Printed circuit VTA assembly | 65713000             | 20                           |
| 8                    | Schaltplatine Steuerwagen Vtb komplett<br>Printed circuit Vtb assembly   | 65713100             | 20                           |
| 9                    | GF-Schraube M2X4<br>GF-Screw M2x4  | 70900004             | 3                            |
| 10                   | Lichtwechseldecoder<br>Light change decoder                              | 687410011            | 20                           |
| 11                   | Sounddecoder<br>Sounddecoder   | 68741001             | 39                           |
| 12                   | Lautsprecher<br>Loudspeaker  | 68700300             | 16                           |

Änderungen in Konstruktion und Ausführung vorbehalten  
We reserve the right to change the construction and specification



| 741075               |  | DB                   | VT 601                       | = |  |  |
|----------------------|--|----------------------|------------------------------|---|--|--|
| Pos. Nr.<br>Pos. no. | Beschreibung<br>Description                                | Art.-Nr.<br>Art. no. | Preisgruppe<br>Price bracket |   |  |  |
| 1                    | Gewicht Zinkal VTA/VTB<br>Weight zinkal VTA/VTB            | 16741001             | 14                           |   |  |  |
| 2                    | Boden für Motorwagen VTA<br>Bottom part VTA                | 30741003             | 14                           |   |  |  |
| 3                    | Boden für Steuerwagen VTB<br>Bottom part VTB               | 307410013            | 14                           |   |  |  |
| 4                    | Drehgestellblende 1<br>Bogie frame 1                       | 31741001             | 12                           |   |  |  |
| 5                    | TS-Drehgestellspanne, Kupplungsleitung<br>Part set         | 33741001             | 14                           |   |  |  |
| 6                    | Kupplungsimitation<br>Coupling imitation                   | 38702200             | 3                            |   |  |  |
| 7                    | Kuppelstange<br>Coupling loco-coages                       | 38901300             | 3                            |   |  |  |
| 8                    | Drehgestellblende 2<br>Bogie frame 2                       | 41741001             | 12                           |   |  |  |
| 9                    | Motor m. Schwungmasse<br>Motor                             | 50741001             | 28                           |   |  |  |
| 10                   | Schneckendeckel 1<br>Worm cover 1                          | 50791000             | 3                            |   |  |  |
| 11                   | Schneckendeckel 2<br>Worm cover 2                          | 50791100             | 3                            |   |  |  |
| 12                   | Radsatz mit Zahnrad m. Nut<br>Wheelset with traction tyres | 53711600             | 11                           |   |  |  |
| 13                   | Radsatz ohne Zahnrad ohne Nut<br>Wheelset without gear     | 53711700             | 9                            |   |  |  |
| 14                   | Hafttring<br>Traction tyre                                 | 54701000             | 10                           |   |  |  |
| 15                   | Schneckensatz<br>Worm set                                  | 56761900             | 13                           |   |  |  |
| 16                   | Kardanschale für Motor<br>Cardan bearing for motor         | 56750200             | 3                            |   |  |  |
| 17                   | Kardanwelle kurz 16.6<br>Cardan bearing 16.6               | 56750300             | 3                            |   |  |  |
| 18                   | Kardanwelle lang 19.6<br>Cardan shaft long 19.6            | 56750400             | 3                            |   |  |  |
| 19                   | Achslager<br>Axle bearing                                  | 61792900             | 5                            |   |  |  |
| 20                   | N-Achslager<br>N-Axle bearing                              | 61793000             | 5                            |   |  |  |
| 21                   | Kupplungskontakt<br>Coupler contact                        | 76702100             | 2                            |   |  |  |



12 o. Abb. / no ill.  
Innenbeleuchtung-Platine kpl.  
Printed circuit ass. for lighting



| 741075               |   | DB                   | VT 601                       | = | 🔊 |  |
|----------------------|---|----------------------|------------------------------|---|---|--|
| Pos. Nr.<br>Pos. no. | Beschreibung<br>Description   | Art.-Nr.<br>Art. no. | Preisgruppe<br>Price bracket |   |   |  |
| 1                    | Wagendach ES140 2 Lüfter<br>Roof ES 140 2 ventilator                        | 12741002             | 11                           |   |   |  |
| 2                    | Wagendach ES41 3 Lüfter<br>Roof ES41 ventilator                             | 127410021            | 11                           |   |   |  |
| 3                    | Faltenbalg komplett Zwischenwagen<br>Car bellows assembly                   | 12812200             | 11                           |   |   |  |
| 4                    | Lichtleitstab f. Inneneinr.<br>Light transmission bar of interior lightning | 13741002             | 6                            |   |   |  |
| 5                    | Wagen Reflektor<br>Car reflector  | 15741002             | 5                            |   |   |  |
| 6                    | Griffstangen-Satz<br>Handrails  | 18741002             | 6                            |   |   |  |
| 7                    | Drehestell komplett Zwischenwagen VMC<br>Bogie frame assembly VMC           | 31741002             | 12                           |   |   |  |
| 8                    | Drehestell komplett Zwischenwagen<br>Bogie frame assembly car               | 317410021            | 18                           |   |   |  |
| 9                    | Kuppelstange Waggon<br>Coupling coach                                       | 38901400             | 3                            |   |   |  |
| 10                   | Kuppelstange mit Drahtgabeln<br>Coupling with wire fork                     | 38901500             | 8                            |   |   |  |
| 11                   | Radsatz ohne Zahnrad o. Nut<br>Wheelset without gear                        | 53711700             | 9                            |   |   |  |
| 12                   | Innenbeleuchtung-Platine kpl.<br>Printed circuit ass. for lighting          | 65713200             | 16                           |   |   |  |

